

## Maverick MQ8 Portable qPCR System

### Product overview

Anitoe Maverick MQ8 is a portable high-performance real time quantitative PCR system. Maverick MQ8 is equipped with a 4-channel direct imaging fluorescence optical system, powered by Anitoe's ultra-low-light CMOS bio-imager sensor; and a fast Peltier-powered thermal cycler. Maverick is optimally suited for applications where portability, minimal space, fast time-to-result is required. Applications of Maverick are point-of-care molecular diagnostics test (POCT)<sup>1</sup>, food safety and environment testing, agriculture, or research lab use where bench space is limited.



Figure 1. Maverick MQ8 Portable qPCR System

### Features

- Fully compatible with standard qPCR assays and consumables
- Compact and rugged design. No internal moving parts, and no need for calibration.
- Multi-wavelengths 4-channels fluorescence sensing capability<sup>2</sup>.
- Equipped with ultra-low-light sensitive CMOS-based fluorescent imager.
- Intuitive easy-to-use cross-platform software, with cloud connectivity.
- Low power. External 16V supply. < 150W active power.

---

<sup>1</sup> Clinical clearance maybe required

<sup>2</sup> Support Intercalating dyes, hydroxyls probes and FRET probes

## Key parameters

Capacity (# of wells)	8
Channels (# of Fluorophores per well)	Up to 4 (1. FAM/SYBR Green; 2. JOE/HEX/VIC/TET; 3. ROX/Texas Red; 4. CY5/LIZ/Cy5.5)
Multiplex capability	Up to 4 targets per well
Minimum detection threshold	3 copies
Dynamic range	>1.0E9
Signal Interface	USB 2.0
Excitation source	High endurance LED
Detector	Ultra-low-light CMOS bio-imaging chip
Thermal system	Solid-state, Peltier-based
Tube/plate formats	0.2mL, 4 or 8-tube strip
Reaction volume	10uL – 60uL
Filters:	4 sets for each excitation and emission channel
Excitation Range:	460nm – 670nm
Emission Range	510nm – 720nm
DNA probes supported:	DNA binding dyes (e.g. SYBR-Green), hydrolysis probes (e.g. TaqMan probe) and hybridization probes (e.g. FRET probes)
Programming modes:	qPCR amplification with touchdown option; isothermal amplification; melting curve analysis; manual fluorescence measurement and quantification
Temperature Uniformity	Within $\pm 0.25^{\circ}\text{C}$ at annealing stage
Temperature control resolution	$\pm 0.1^{\circ}\text{C}$
Temperature Ramp Rate	Up to $6.5^{\circ}\text{C} / \text{s}$ heating; $4^{\circ}\text{C} / \text{s}$ cooling
Size and weight	175mm (L) x 145mm (W) x 100mm (H)
Weight	1275g
Power supply	DC 12V, 100W (CE-approved adapter provided that accepts 110V/240V AC)
Operating Environment	5 – $40^{\circ}\text{C}$ , 80% humidity
Storage Environment	-20 – $55^{\circ}\text{C}$ , 93% humidity

### Assay compatibility

Maverick qPCR Instruments are open platforms that are fully compatible with all standard qPCR or RT-PCR assays/chemistries.

Maverick qPCR Instruments use standard 0.2ml fully transparent qPCR tubes that can be easily sourced.

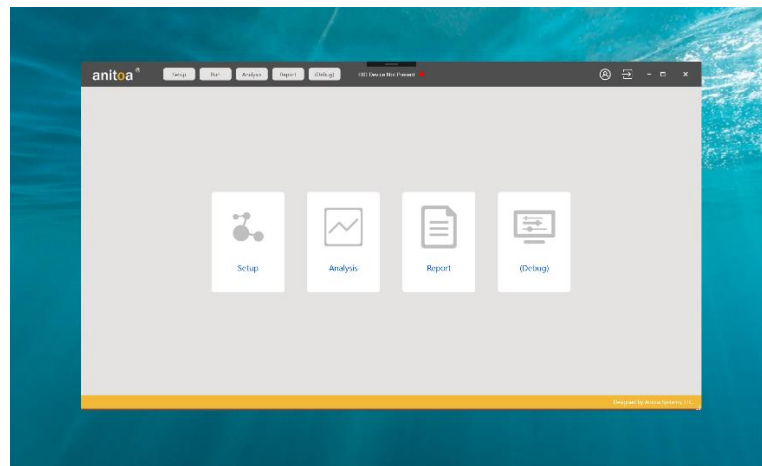


Figure 2. Maverick™ software, multi-language, and multi-platform (PC, Android)

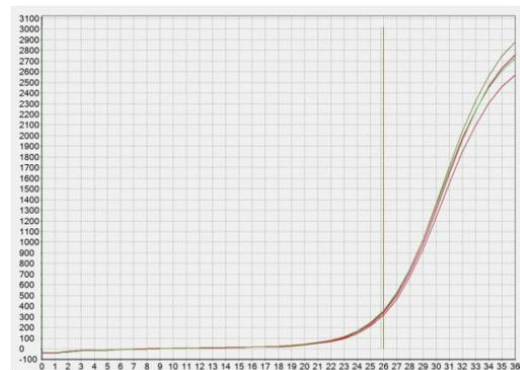
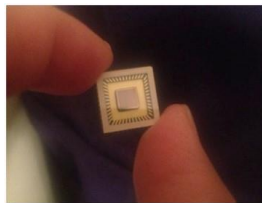


Figure 3. Maverick uses Anitoa's ultra-sensitive CMOS Image Sensor (CIS) for fluorescence detection

### Applications

- Point-of-care molecular diagnostics<sup>3</sup>
- Food safety test
- Environmental microbial-threat monitoring
- Agriculture DNA testing
- Forensic testing
- Research and educational lab use
- Drug quality assurance testing

### Contact

Anitoa Systems, LLC  
525 W Remington Drive, #124  
Sunnyvale, CA 94087  
[www.anitoa.com](http://www.anitoa.com)  
[info@anitoa.com](mailto:info@anitoa.com)

---

<sup>3</sup> Clinical clearance required.